



**1 year<sup>\*</sup>**  
**warranty**

## **RoyalCondor®** **Ceres 20 L.**

The primary feature of this internal pump sprayer is its modern design that makes cleaning and maintenance easy. It doesn't require any tools and has few components, making care simple.

Additionally, it uniquely allows for operation with either hand by simply shifting the pump to the other side.

## **Internal Pump** **Manual Sprayer**

### **The Pro's Choice** **For Commercial Sprayers**

## **FUNCTIONAL INFORMATION**



- **Comfortable Container:** Adjusts to the contour of the back. Made of HDPE, it's UV-resistant and impact-proof.
- **Dual Operation:** Allows lever usage on either the left or right side.
- **Stirrer:** Ensures solutions remain soluble.
- **Container Cap:** Quick and easy closure for a perfect seal.
- **Straps:** Ergonomic, padded, adjustable, and highly durable.
- **Container Filter:** Enhanced filter design for quicker fill and to prevent splashing.
- **Viton O-Rings and Gaskets:** To ensure product performance and durability.
- **Tilted forward tank opening:** Eventual spills during filling won't be in contact with user's back.

\* Not included in the warranty: Container, Frame, Chamber, O'rings.



**CONTAINER**  
5.25gal/20L



**WORKING PRESSURE**  
30 to 60 psi



**WEIGHT**  
10.1lb/4.6 kg



**DIMENSIONS**  
23.8"x16.5"x9"










**SPARE PARTS**

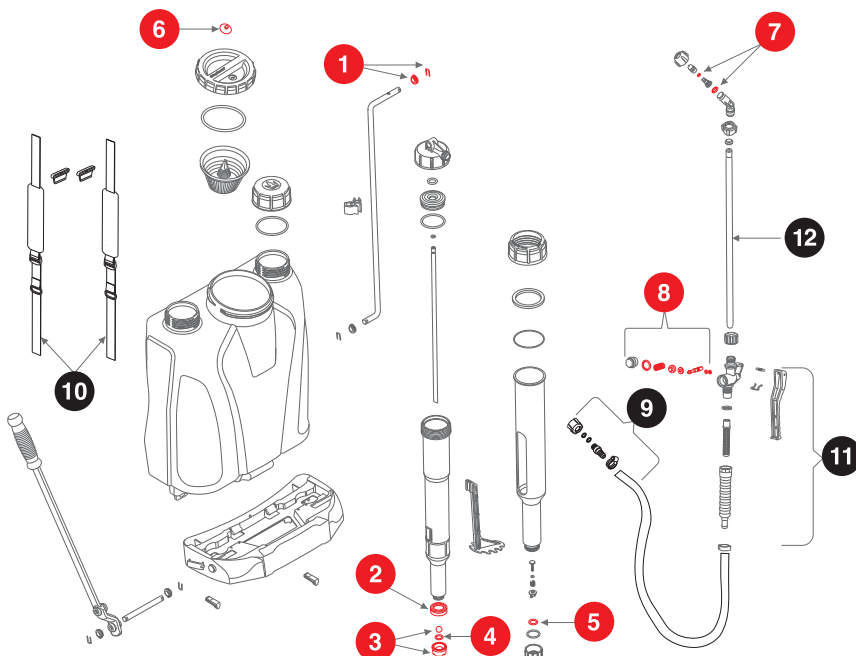


**RoyalCondor®**  
Ceres 20 L.

## TECHNICAL DATA SHEET

 <b>DIMENSIONS:</b>	<b>Sprayer:</b> H: 23,2" / 590mm, L: 16.3" / 415mm, W: 8.8" / 225mm <b>Box:</b> H: 23.8" / 605mm, L: 16.5" / 420mm, W: 9" / 230mm
 <b>WEIGHT:</b>	<b>N Weight:</b> 10.1lb / 4.6kg / G Weight: 11.68lb / 5.3kg
 <b>WAND:</b>	19.6" / 500mm
 <b>HOSE:</b>	47.2" / 1200mm nylon reinforced PVC
 <b>CONTAINER:</b>	<b>Capacity:</b> 5.25gal / 20L <b>Material:</b> HDPE
 <b>PUMP:</b>	<b>Type:</b> Internal hydraulic piston with integrated pressure chamber <b>Max. Test Pressure:</b> 180 psi <b>Safety Valve:</b> Activates at 165 psi <b>Working Pressure:</b> 45 psi
 <b>ACCESORIES:</b>	Metallic hollow cone nozzle 600 cc/min (Included) Plastic flat spray nozzle 600 cc/min (Included)
<b>HS CODE:</b>	8424.41.9000

## SPARE PARTS



N°	REFERENCE	DESCRIPTION
1		U pin and washer
2		Pump felt
3		Piston gasket (Viton®)
4		Nut for chamber ball
5	Ceres20L Repair Kit RP01M_RMI-KIT-USA	O'ring (Viton®)
6		Vent diaphragm
7		Port-nozzle O'ring
8		Gasket Kit
9	RMI-305X	Hose
10	RMI-700EX	Straps
11	RC-920ELPNX	Trigger valve
12	RP01M_RCA-346ELFX	Plastic wand