



1 year*
warranty

RoyalCondor® Handy 7L.

Manual compression sprayer, easy to operate and equipped with a pressure relief valve. Pressure levels are indicated by the valve colors: red means the maximum spraying pressure has been attained.

Multipurpose **pressure sprayer**

The Pro's Choice **For Commercial Sprayers**

FUNCTIONAL INFORMATION



- **Funnel cap:** With 18% more pouring area, its square funnel facilitates filling and generates less waste.
- **Base:** The container is reinforced with support points for better stability.
- **Plunger handle:** New resistant design with improved ergonomics, facilitates grip and pumping effort. Serves as a lance holder.
- **Safety valve:** Pressure release with alert levels. Components materials and design make this unit extremely ery resistant to chemicals.
- **Strap hooks:** Reinforced, five times stronger than other sprayers, load capacity 45kg.

*Not included in the warranty: Container, chamber, O'rings



CONTAINER
1.84gal/7L



WORKING PRESSURE
30 +/- 5 psi



WEIGHT
3.83lb/1.74 kg



DIMENSIONS
18.89"X8.46"X8.07"










SPARE PARTS

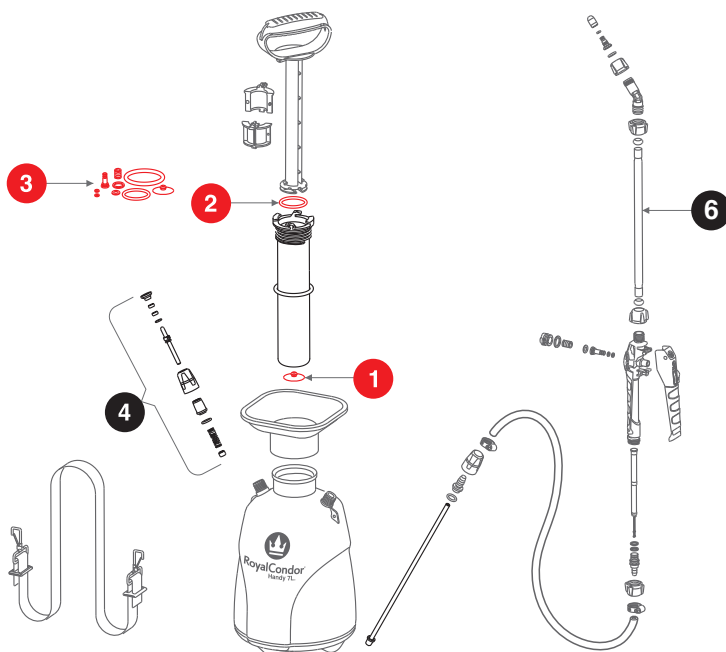


RoyalCondor®
Handy 7L.

TECHNICAL DATA SHEET

	DIMENSIONS:	Sprayer: H: 17,32" / 440mm, L: 8.66" / 220mm, W: 7.87" / 200mm Box: H: 18.89" / 480mm, L: 8.46" / 215mm, W: 8.07" / 205mm
	WEIGHT:	N Weight: 3.83lb / 1.74kg / G Weight: 4.55lb / 2.06kg
	WAND:	17.71 / 450
	HOSE:	49.21" / 1250mm, high resistance in PVC
	CONTAINER:	Capacity: 1.8gal / 7L Material: HDPE
	PUMP:	Type: Manual Compression Sprayer Working Pressure: 30 +/- 5psi Max. Pressure: 50 +/- 5psi
	ACCESORIES	Metallic hollow cone nozzle 400 cc/min (Included) Check www.royalcondor.com for a variety of accessories
	HS CODE:	8424.41.9000

SPARE PARTS



N°	REFERENCE	DESCRIPTION
1	Handy 7L. Repair Kit	Piston
2	RP01M_RHB-KIT-USA	Piston O'ring
3		O'ring kit (Viton®)
4	HB-8A-8B	Safety valve
5	RHB-13	Internal hose
6	RP01M_RHB-347ELFX	Plastic wand